



MONTHLY MEMBERSHIP PROGRESS REPORT

District 2 A1

Results as of: 4/30/2017

GMT: HAL GRIFFIN

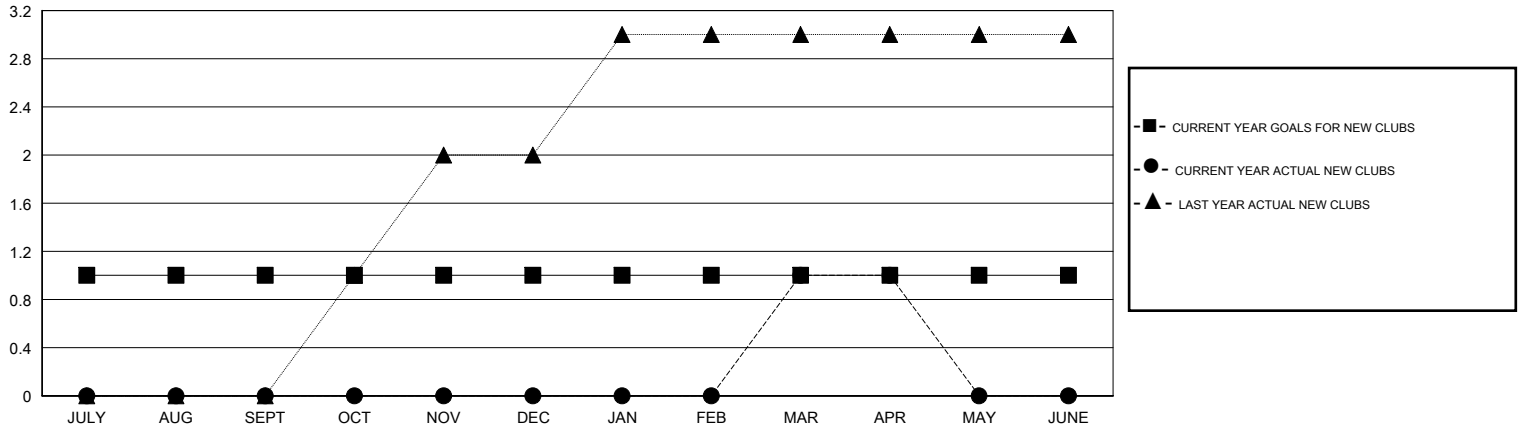
LOCATION TEXAS

GMT CA

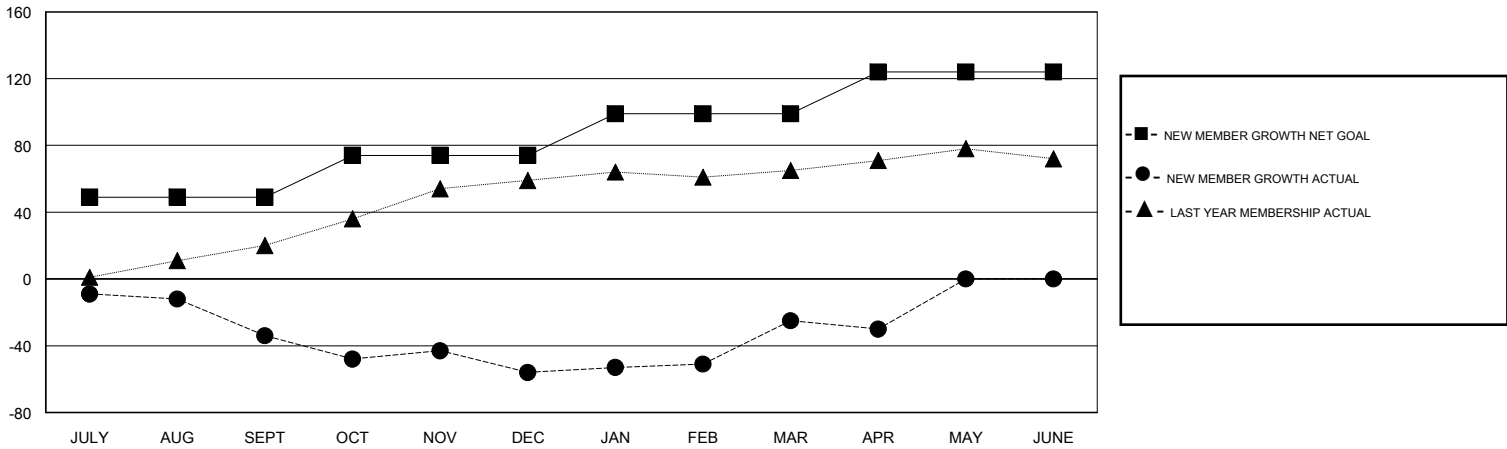
Clubs			
RESULTS FOR 2016-2017			
QUARTER	NEW CLUB GOAL	NEW CLUBS	DROPPED CLUBS
JULY/AUG/SEPT	1	0	0
OCT/NOV/DEC	0	0	1
JAN/FEB/MAR	0	1	0
APR/MAY/JUNE	0	0	0

Members			
RESULTS FOR 2016-2017			
QUARTER	NEW MEMBER GROWTH NET GOAL (not reinstated or transfers)	NEW MEMBER GROWTH ACTUAL (not reinstated or transfers)	DROPPED MEMBERS ACTUAL (including transfers)
JULY/AUG/SEPT	49	48	82
OCT/NOV/DEC	25	30	52
JAN/FEB/MAR	25	81	50
APR/MAY/JUNE	25	12	17

GOALS AND ACTUAL NEW CLUBS CUMULATIVE



GOALS AND ACTUAL MEMBERS CUMULATIVE



DROPPED CLUBS: 1	37 CLUBS OF 50 ADDED 1 OR MORE NEW MEMBERS	<u>GENDER DISTRIBUTION</u>	
DROPPED MEMBERS		MALE	920 (70.02%)
DECEASED	13	FEMALE	394 (29.98%)
CLUB CANCELLED	13	TOTAL FAMILY UNIT MEMBERS	
OTHER	175	175	
TOTAL	201	FAMILY MEMBERS PAYING HALF DUES	
		89	

[CLICK HERE FOR CUMULATIVE MEMBERSHIP DATA](#)